

V5 CP6 Edition Release Note

1. HOPEX Business Process Analysis (HBPA)

◦ Fix

Case Salesforce : 00126309

Cannot add a Review Note for a Business Process or Organizational Process in list views

In the BPA desktop, in the Business Processes or Org Processes list views, a review note could not be added when clicking on the review note button on the right-hand side from the list view. It did work however when clicking on the button when the property page was opened or when a review note already existed for the object.

Fix : the behavior is now homogenous and review notes can be created in all cases.

Case Salesforce : 00126949

Cannot align Participants in separate pools

Participants in separate pools in a process diagram could not be aligned left (for instance) using the alignment control buttons on the right-hand toolbar.

Fix : this is now possible.

Case Salesforce : 00128597

Unexpected display for Process Hierarchy tree (scroll down)

When scrolling down an un-collapsed process hierarchy tree, a blank page was displayed.

Now the bug is fixed.

Tabular Diagram - auto sequencing limitations when connecting high number of org processes in a business process diagram

From a Business Process diagram tabular entry, when connecting multiple processes at once using the "connect" button, the automatically created sequence flows gave an unexpected result (random order for connected items).

Fix : the auto-sequencing behavior is now disabled when connecting multiple objects at once, since no order can be given automatically.

System-Used name for Tabular Diagramming is not the same as in Diagram editor

In the diagram editor, the system used has no visible local name (i.e. it is initialized to the specification element name). In the tabular entry the name was set to 'system used' for the local name, on top of the specification element object (e.g. application) name.

Fix : the behavior in tabular entry is now aligned to the diagram graphical editor behavior.

Case Salesforce : 00133458
Spanish translations added

This bug is fixed: the Spanish translation is added and now available for the word "required"/"obligatoire"/"obligatorio"

◦ **Known issue**

in the Business Process Tabular entry, it should be possible to disconnect connected processes

The 'remove' button in Business Process Tabular entry only proposes to 'delete' and not also 'disconnect' for connected processes.

in processes tabular entry, the columns combo box look and feel is not so good

In the tabular entry, when using the multiple combo boxes in the columns, the combo width and the look and feel of the combo is not correct.

- **New feature**

New aggregation logics for Key Indicators

2 new aggregation methods have been added to aggregate Key Indicators

Values:

- Min: shows the lowest value reached over the period;
- Max: shows the highest value reached over the period.

2. HOPEX Enterprise Risk Management (ERMW)

- **Change**

Assessment menu structure review

The following has been removed:

Navigation menu / Assessment > Preparation > Questionnaire Templates

While in the following:

Navigation menu / Assessment > Preparation > Assessment Templates

- the Assessment Mode column has been added
- the filter has been changed: this tree now displays only Assessment Templates where Assessment Mode <> Execution

Renamed button to delete/disconnect Related Risks

The button to delete/disconnect Related Risks has been renamed into "Remove".

◦ Fix

Case Salesforce : 00130848
Error when creating Incident object

The error message has been managed and the issue fixed.

Case Salesforce : 00126750
Error when running Risk-related widgets (large volume of Risk objects)

The following timeout error which appeared on some dashboard widgets has been solved.

Risk Evaluation



The request was canceled due to the configured HttpClient.Timeout of 100 seconds elapsing.

Case Salesforce : 00129009
Disconnect Related Risks from a Risk

It is now possible to disconnect Risks from Risks in the Analysis section (Related Risks).

Case Salesforce : 00134360
Operations and Risk direct assessment

Risks connected to Operations can now be assessed.

Case Salesforce : 00134786
Questionnaire with Assessed object containing a special character

The error preventing the opening of Questionnaires has been solved.

Case Salesforce : 00135272
Open one Questionnaire at a time

The error allowing the opening of multiple Questionnaires has been solved.

Case Salesforce : 00136991

Comment when creating Controls

The comment in the creation wizard is not correctly copied into the properties of the new object.

◦ **New feature**

New aggregation logics for Key Indicators

2 new aggregation methods have been added to aggregate Key Indicators

Values:

- Min: shows the lowest value reached over the period;
- Max: shows the highest value reached over the period.

3. HOPEX Internal Audit (MIAW)

◦ **Change**

Updated Gantt renderer of My Detailed Schedule Report

The Gantt displayed in My Detailed Schedule Report has been updated with the latest renderer.

Spanish translation of Audit Report

The Audit report translation into Spanish has been reviewed and improved.

◦ **New feature**

New aggregation logics for Key Indicators

2 new aggregation methods have been added to aggregate Key Indicators

Values:

- Min: shows the lowest value reached over the period;
- Max: shows the highest value reached over the period.

4. HOPEX Internal Control (ICM)

◦ Change

Control Directives by Regulatory Framework

The menu item

Registers > Compliance > By Regulatory Framework

has been added to the following profiles:

- Internal Control Director
- Internal Controller

It shows the tree of Regulations, Sections, Articles and Control Directives.

Assessment menu structure review

The following has been removed:

Navigation menu / Assessment > Preparation > Questionnaire Templates

While in the following:

Navigation menu / Assessment > Preparation > Assessment Templates

- the Assessment Mode column has been added
- the filter has been changed: this tree now displays only Assessment Templates where Assessment Mode <> Execution

Updated Gantt renderer of My Detailed Schedule Report

The Gantt displayed in My Detailed Schedule Report has been updated with the latest renderer.

◦ Fix

Case Salesforce : 00134786

Questionnaire with Assessed object containing a special character

Questionnaire with Assessed object containing a special character

The error preventing the opening of Questionnaires has been solved.

Case Salesforce : 00135272

Open one Questionnaire at a time

The error allowing the opening of multiple Questionnaires has been solved.

Case Salesforce : 00136991

Comment when creating Controls

The comment in the creation wizard is not correctly copied into the properties of the new object.

◦ **New feature**

New aggregation logics for Key Indicators

2 new aggregation methods have been added to aggregate Key Indicators

Values:

- Min: shows the lowest value reached over the period;
- Max: shows the highest value reached over the period.

5. HOPEX LDC (LDC)

◦ **Fix**

Case Salesforce : 00130848

Error when creating Incident object

The error message has been managed and the issue fixed.

◦ **New feature**

New aggregation logics for Key Indicators

2 new aggregation methods have been added to aggregate Key Indicators

Values:

- Min: shows the lowest value reached over the period.

- Min: shows the lowest value reached over the period,
- Max: shows the highest value reached over the period.

6. HOPEX Risk Mapper (ERML)

◦ Fix

Case Salesforce : 00129009

Disconnect Related Risks from a Risk

It is now possible to disconnect Risks from Risks in the Analysis section (Related Risks).

Case Salesforce : 00134360

Operations and Risk direct assessment

Risks connected to Operations can now be assessed.

Case Salesforce : 00134786

Questionnaire with Assessed object containing a special character

The error preventing the opening of Questionnaires has been solved.

Case Salesforce : 00135272

Open one Questionnaire at a time

The error allowing the opening of multiple Questionnaires has been solved.

Case Salesforce : 00136991

Comment when creating Controls

The comment in the creation wizard is not correctly copied into the properties of the new object.

◦ New feature

New aggregation logics for Key Indicators

2 new aggregation methods have been added to aggregate Key Indicators

Values:

- Min: shows the lowest value reached over the period;
- Max: shows the highest value reached over the period.

7. HOPEX Contributor (CBTR)

◦ Fix

Case Salesforce : 00130092

Case 00130092 Action tile not displayed in HOPEX V4

The My Actions tile has been reintroduced for the IRM Contributor profile.

IRM Contributor performances

Lists of objects for the IRM contributors have been reviewed. Some columns have been removed.

Case Salesforce : 00136991

Comment when creating Controls

The comment in the creation wizard is not correctly copied into the properties of the new object.

◦ New feature

New aggregation logics for Key Indicators

2 new aggregation methods have been added to aggregate Key Indicators

Values:

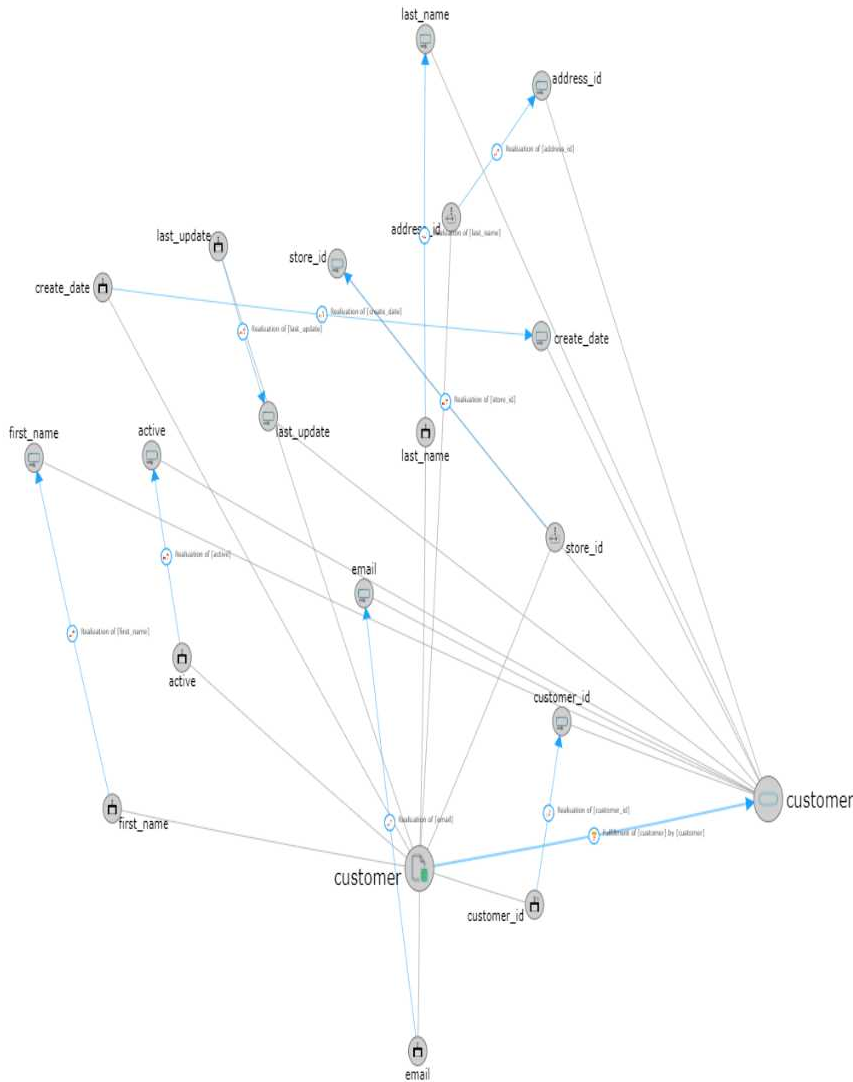
- Min: shows the lowest value reached over the period;
- Max: shows the highest value reached over the period.

8. HOPEX Information Architecture (INFA)

- **Change**

Limit the depth of the realization graph

To make the realization graph usable in a large volume context, the depth has been limited.



Data Realization objects are not visible for users different that creator

Data Realization Matrices are no longer filtered only for creators. They are visible for all users

- **Fix**

Objects with unexpected name (Uninitialized) when running synchronization (physical to logical)

Resolving unexpected (uninitialized) names when synchronizing a database from the physical to the logical level.

Scope Target

Specify the objects to protect:

	Frozen	Name	ExpressionType	Length	Decimal	Manda
00 DB 01		00 DB 01				
00 DB 01		00 DB 01				
Class Diagram		00 DB 01 - Class Diagram				
(Uninitialized)		(Uninitialized)				
(Uninitialized)		(Uninitialized)				
(Uninitialized)		(Uninitialized)				Yes
(Uninitialized)		(Uninitialized)				Yes
COLUMN6		COLUMN6				No
Part		Part				
TABLE1		TABLE1				
KEY1		KEY1				
COLUMN1		COLUMN1				Yes
COLUMN2		COLUMN2				No
COLUMN5		COLUMN5				No
Part		Part				

Case Salesforce : 00130238

TypeClass attribute in Class should not be a mandatory field

TypeClass attribute in Class is no longer mandatory field.

Case Salesforce : 00130286

Duplicate tab Characteristics in properties of Column and Class

Column property pages are no longer duplicated.

Case Salesforce : 00132328

Unexpected behavior when generating a DDL from a Table

No description

Case Salesforce : 00132699

Cannot set 'Attribute value' for Attributes of Class Instance (ValueSlot)

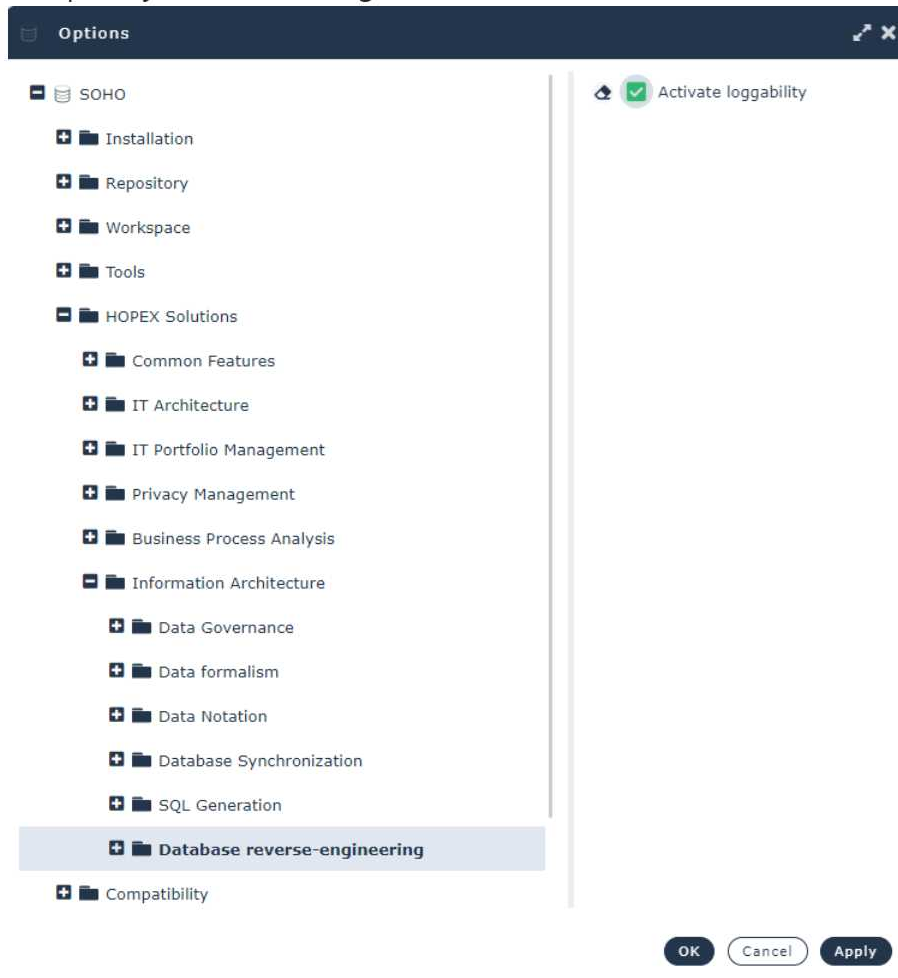
Bug fixed: now it's possible to set 'attribute value' for Attributes of Class Instance (ValueSlot)

Activate object logging during the reverse engineering of a database

New option is provided to enable logging of database objects during reverse engineering.

By default, change items are not created during this Database reverse. To create them, please check the following option "Activate loggability"

Temporary screen: waiting for translation



Case Salesforce : 00134596

Unexpected behavior when running wizard Synchronization Logical to Physical

It is again possible to take into account the reflexive association during the Logical to Physical Synchro

Double Characteristics pages of relational schema components

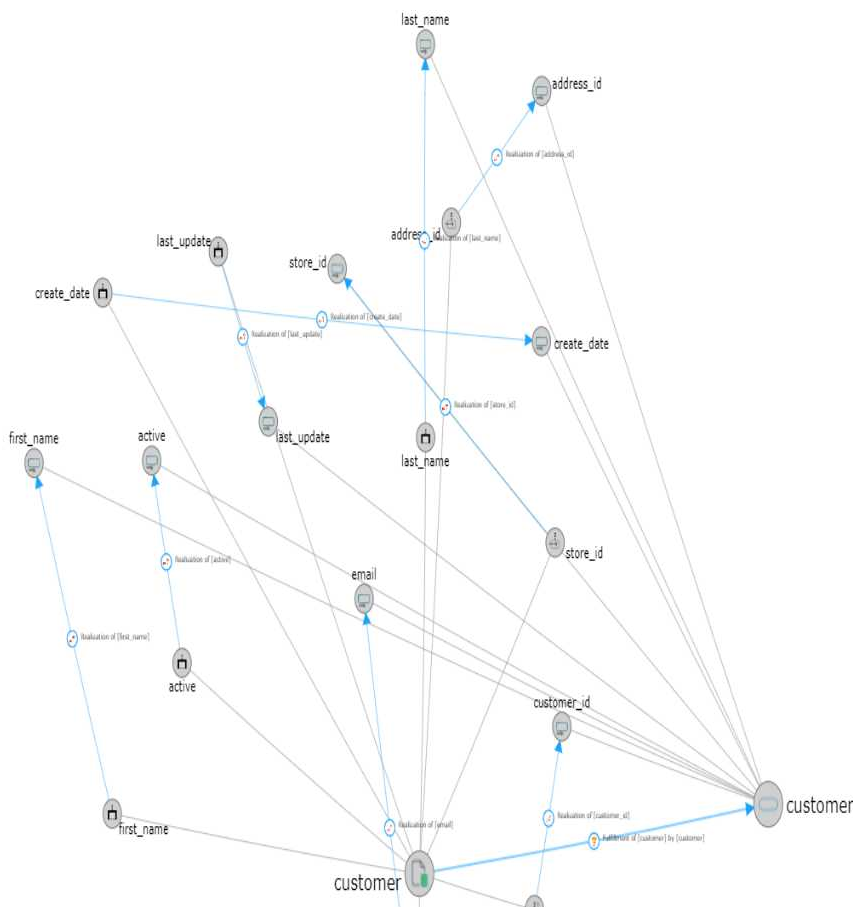
Removal of the Characteristics double pages of the "Business Data" and "Physical Data" components of a relational schema.

9. HOPEX Data Governance (DGOV)

- Change

Limit the depth of the realization graph

To make the realization graph usable in a large volume context, the depth has been limited.





Manta Viewer - Visualization of Technical Data lineage in Manta from HOPEX Data Governance.

To display the Technical Data Lineage of a metadata imported from Manta, HOPEX relies on its permalink which is exported in the CSV file to be as synchronous as possible with the latest Manta scan revision.

This permalink is imported for processing objects (Data Processing, program, program block, stored procedure) and metadata (deployed Data store, schema, meta dataset , meta field).

The permalink is used as a button in the Characteristics page to access the Manta Viewer.

Data Realization objects are not visible for users different that creator

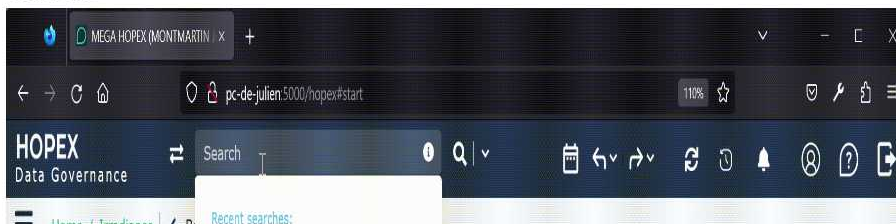
Data Realization Matrices are no longer filtered only for creators. They are visible for all users

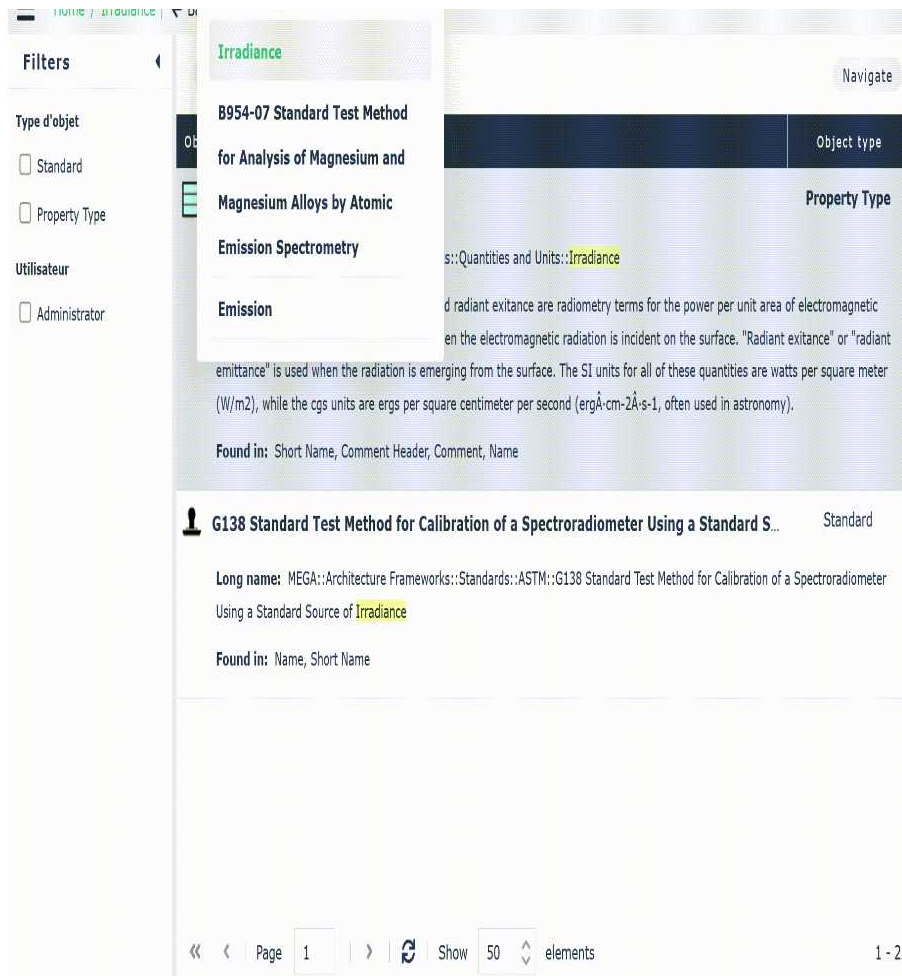
o **Fix**

Case Salesforce : 00128276

Unexpected display when searching in Business Glossary (ID displayed with autocomplete)

Proposal now displays the short name of the objects where the search text is found.





The Meta Fields Components tab of the Meta DataView object are missing.

The "meta fields" page has been added in the properties box of Meta data view to access the list of its meta fields.

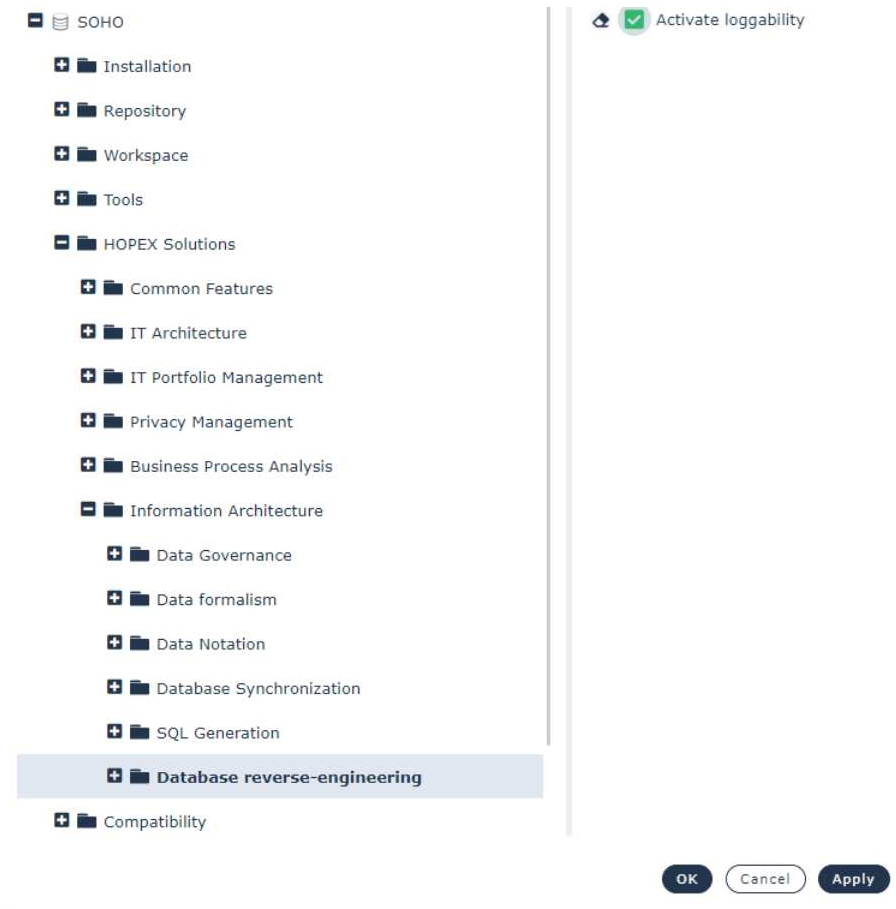
Activate object logging during the reverse engineering of a database

New option is provided to enable logging of database objects during reverse engineering.

By default, change items are not created during this Database reverse. To create them, please check the following option "Activate loggability"

Temporary screen: waiting for translation





Case Salesforce : 00133760

Error when displaying report tab (Error session has expired)

The error occurs when the report tab contains a Graph Report with a number of node that exceed the node limit.

Case Salesforce : 00133253

Update Field Type, Length, Decimal fields on a MetaField

Type, Length, Decimal properties of meta fields can now be updated from the property page in HOPEX Data Governance.

However, if these properties come from Data Discovery, during the next incremental import, these properties values will be overwritten by the values retrieved by the discovery.

Regulatory articles cannot be linked to existing Controls Directives.

It is now possible from the characteristic page of regulatory articles to link them to existing control directives.

Case Salesforce : 00134841

'Open in a new tab' resolved in specific list

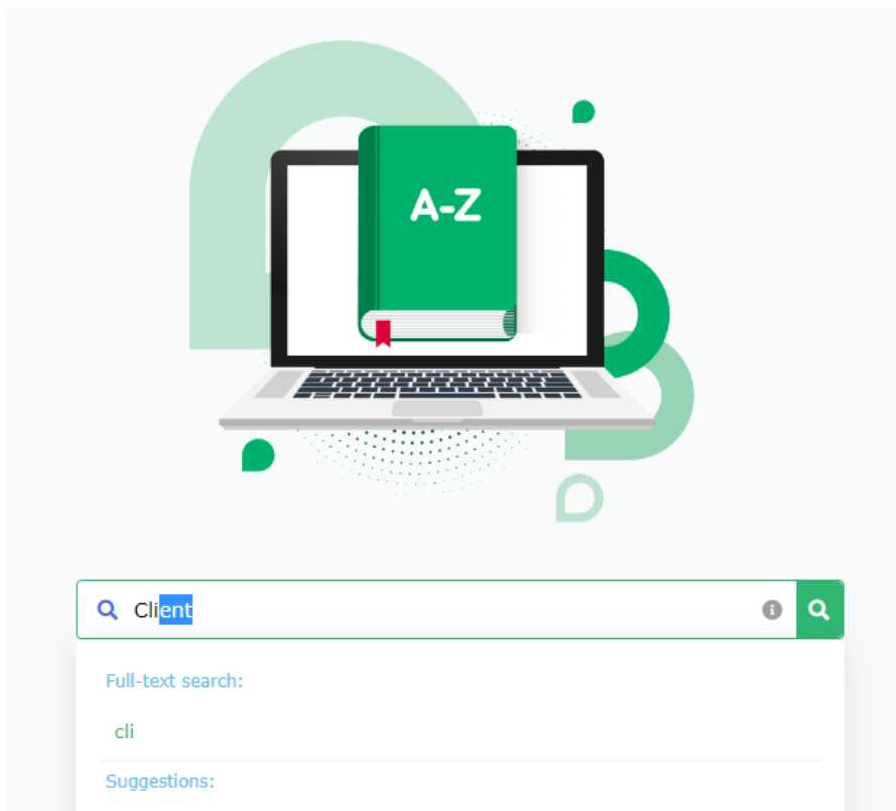
This bug is fixed: no web session anymore while using 'open in a new tab' on specific list

Double Characteristics pages of relational schema components

Removal of the Characteristics double pages of the "Business Data" and "Physical Data" components of a relational schema.

Unexpected display when searching in Business Glossary (ID displayed with autocomplete)

Removal of ID displayed with autocomplete when searching in Business Glossary.





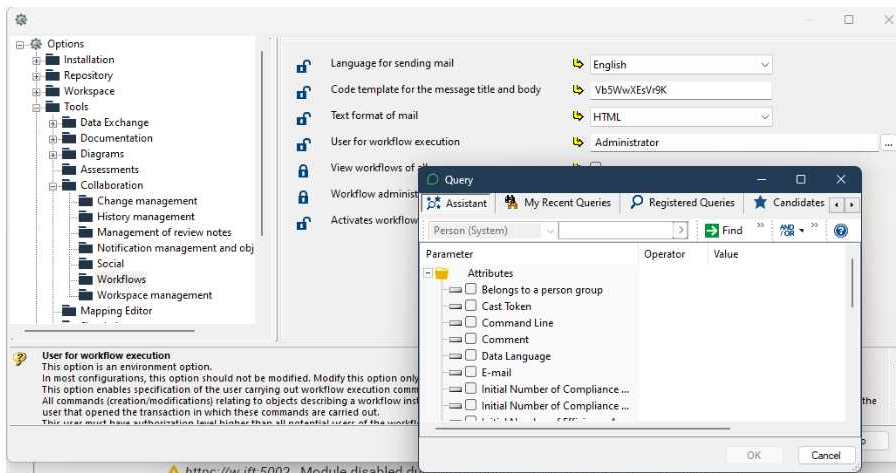
10. All Products

- Change

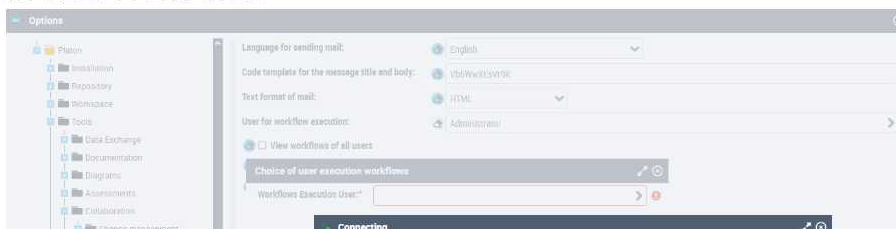
The Option "User for workflow execution" user selection has changed

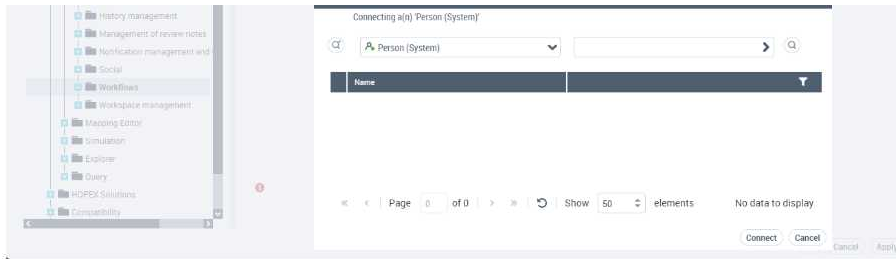
The "User for workflow execution" user selection option has changed. It now opens a query tool to find the user.

In Windows Front-End:



In Web Front-End:





Link name can now be displayed in sketch diagram

In a sketch diagram, link name was not displayed. It is now possible after activating the corresponding option in "shape and details" menu

Restore control in Automatic Environment Upgrade Wizard

No description

o **Deprecated feature**

Remove creation of a sketch from a Business Document

Due to the lack of result in shape recognition, we have removed the creation of a sketch diagram from a picture stored in a business document.

o **Fix**

Case Salesforce : 00124595

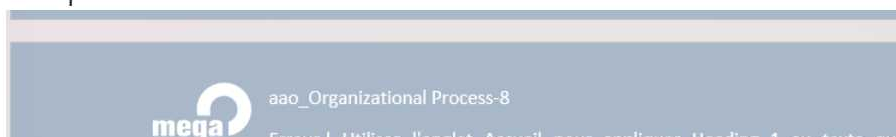
Reorder in list

Bug fixed : now all the items in a list are correctly reordered (with alphabetical sort, for example)

Case Salesforce : 00125227

Incorrect size for bullets in Report (MS Word)

The problem is solved



apparaître ici.

1. DESCRIPTION GENERALE

Manager org-unit :

- A
- B
- C
- D
- E

1.1. Context

 ***This process does not participate in implementation of .***

Case Salesforce : 00127974

Application components in the standard tree are no longer displayed twice

Some components of application were displayed twice in the standard navigation tree. It has been fixed.

Case Salesforce : 00130134

No title

"Project Hierarchy" tree was not displaying project diagram. It is now.

Case Salesforce : 00130223

Cannot run specific report (Custom report template)

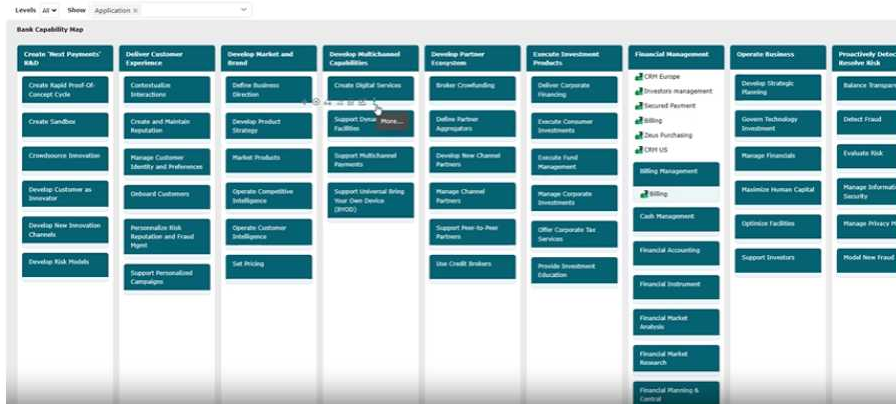
Loading message is displayed and the report execution failed

Case Salesforce : 00130765

Unexpected display of floating toolbar on Business Capability Map Breakdown

Report

In full screen mode the floating toolbar remains visible and disturbs the reading of the report



Case Salesforce : 00132299

Many event entries added to Configuration Database

Decrease in the number of supervision elements added to Configuration Database

Case Salesforce : 00132566

Session timeout issue with wizard

Bug fixed : the wizard for workflow management works even if a session timeout occurs

Case Salesforce : 00131877

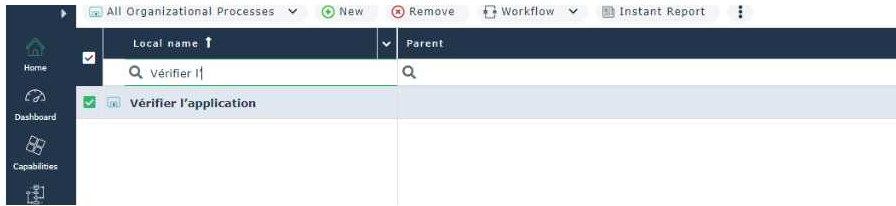
Session timeout issue (open a diagram)

Bug fixed : Opening a diagram will not trigger session expired message any more.

Case Salesforce : 00132841

Unexpected behavior filtering a list with simple quote.

Unexpected behavior filtering a list with simple quote.



Case Salesforce : 00132575

Variation in number of tabs displayed

Bug fixed : the number of displayed tabs is now stable, as expected.

Case Salesforce : 00133818

MetaAttributeUpdate tool fixed (Property Page)

Bug fixed: in the Property Pages, while using the "MetaAttributeUpdate" tool, the combobox impacts the "idabs" by applying selected value.

Case Salesforce : 00135300

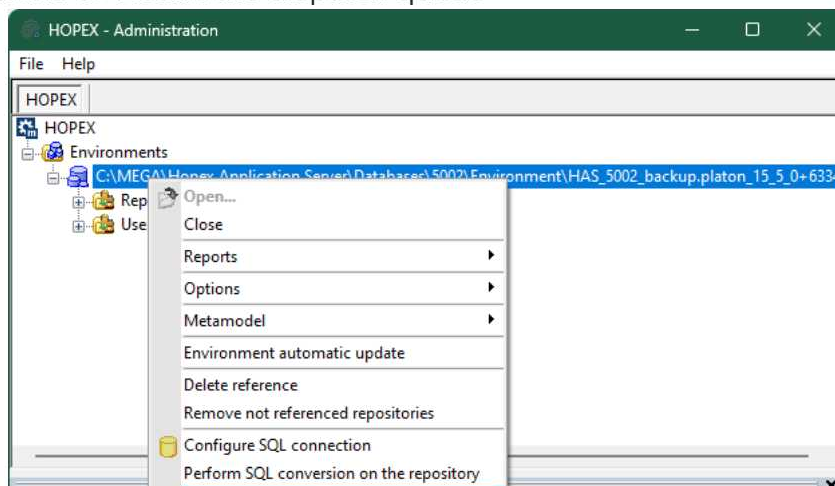
Error when running ERQL query (special char'\')

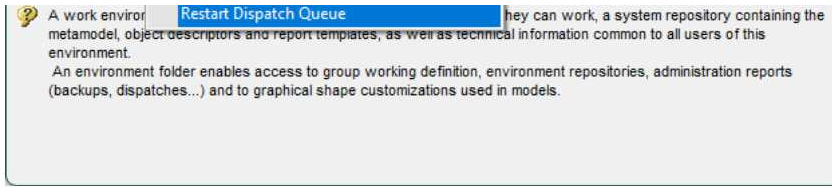
The following query does not fail

Select [Organizational Process] Where name = "test\0"

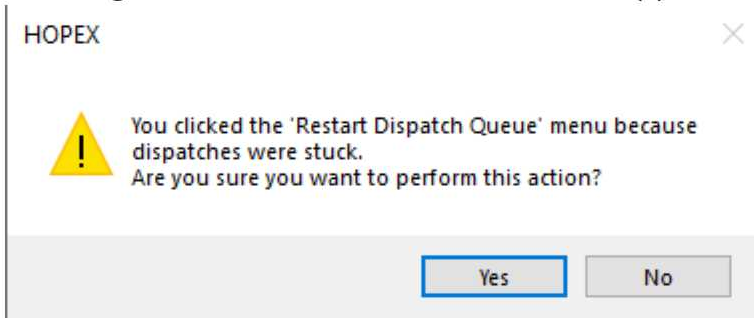
New administration menu (Restart Dispatch Queue, Administrators only)

On support request only - if no dispatch has been performed for 8 hours, select this menu to restart the dispatch queue





After selecting the menu, a confirmation window appears:



then the dispatch restarts as usual.

Case Salesforce : 00133972

Identification of current object in list resolved

Bug fixed : now the identification of current object in list is correct (when the group is collapsed)

o New feature

New method to compile environment with API scripts

The compile function is now deprecated

```
Dim oMegaCurrentEnv
```

```
oMegaCurrentEnv.compile "B0SNPuLckCQ3", "MetaModel=0 TechnicalData=0 Permission=1"
```

consider the use of **oRoot.CallFunction("~91tmJFSUQL6I[Compilation]",
MetaModel, TechnicalData, Permission, DeleteOldCompilationResults,
SaveCurrentCompilationResults)**

```
Dim oRoot
```

```
Dim MetaModel, TechnicalData, Permission, DeleteOldCompilationResults, SaveCurrentCompil
```

```
MetaModel=1
```

```
TechnicalData=1
```

```
Permission=1
```

```
DeleteOldCompilationResults = 1
```

```
SaveCurrentCompilationResults = 1
```

```
sResult = oRoot.CallFunction("~91tmJFSUQL6I[Compilation]", MetaModel, TechnicalData,
```

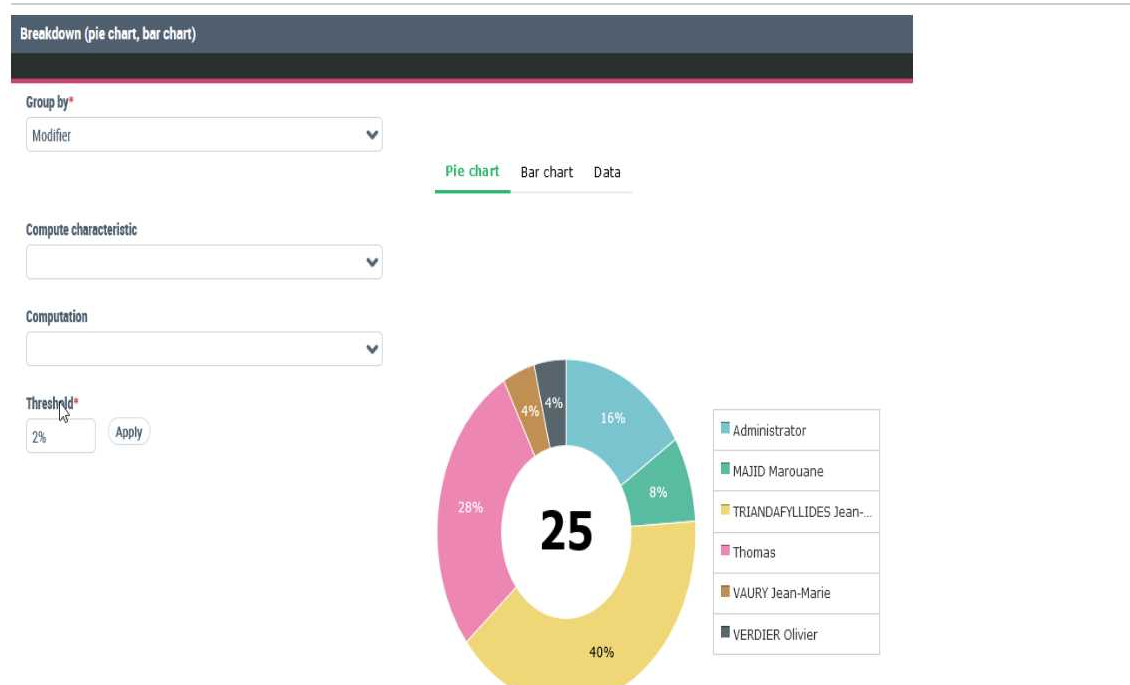
sResult is a json that gives a status after compilation:

```
{  
  "compilationrequired":1,  
  "metamodelcompiled":1,  
  "technicaldatacompiled":1,  
  "permissionscompiled":1,  
  "messages":[]  
}
```

11. HOPEX Power Studio (MTS2)

- Change

Tooltips have been added in instant reporting UI





Tooltips in instant reporting are missing. None of the fields of an instant report have an explanatory tooltip. Some would really need it. Like the "Threshold", in order to explain what this field does.

Nodes added to a graphset definition are no longer considered entry points by default

With the exception of the start node of the graph, nodes added to a graphset definition are no longer considered as entry points by default. By default the attribute 'Can be an entry point' is set to False

- **Fix**

Case Salesforce : 00128264

Wizard Create Report DataSet does not consider Product filtering

Some Metaclasses are wrongly proposed in the report dataset creation wizard

12. HOPEX Process Simulation (HSIM)

- **Known issue**

Simulation scenario 'mxml' logfile business document has an incorrect file format suffix

The business doc should be seen as a gzip archive file containing the mxml file.

13. HOPEX Architecture (ARC)

- **Fix**

Case Salesforce : 00129116

Font issue resolved

Bug fixed: now the displayed font is correct for content in "Application

bug fixed: now the displayed font is correct for content in "Application Environment Diagrams"

Case Salesforce : 00131546

Diagram Editor : alignment of multiple fields

Bug fixed: aligning multiple fields works while editing a diagram.

Case Salesforce : 00131596

Set compatibility language for MetaAttribute 'Application Type' (_Compatibility (Français))

The "Type de l'application" meta-attribute in V5 has changed its name in french compared to previous versions (old name "Type application"). But no compatibility language has been specified, which leads to problems on specific macros/queries who hardcode this attribut.

The fix set 'Application Type' in the compatibility language "_Compatibility (Français)" for this MetaAttribute.

Case Salesforce : 00132037

In the Main Objects navigation tree, objects in diagram are now displayed

In the "Main Objects" navigation tree, objects were not displayed any more under diagram node. They have been put back.

In the Main Objects navigation tree, objects in diagram are now displayed

In the "Main Objects" navigation tree, objects were not displayed any more under diagram node. They have been put back.

Case Salesforce : 00132037

In the Main Objects navigation tree, objects in diagram are now displayed

In the "Main Objects" navigation tree, objects were not displayed any more under diagram node. They have been put back.

14. HOPEX IT Architecture V2 (HITA)

◦ Change

Remove useless field when creating a new network technical connection

Network technical connection name is automatically initialized during creation wizard. Therefore there is no need to propose to capture it. It has been removed from the wizard screen.

Remove useless field when creating a new technical communication line

Technical communication line name is automatically initialized during creation wizard. Therefore there is no need to propose to capture it. It has been removed from the wizard screen.

Prevent protocol name change when changing communication port name

Communication port name is automatically associated with the name of the protocol linked. Changing name of communication port was changing the name of the reference protocol (shared with other communication ports). To prevent this issue, change of communication port has been disabled. To personalize "name" used/displayed for communication port, architect should use the label of the communication port instead.

◦ Fix

Case Salesforce : 00128186

Facility shapes are now visible and usable in resource architecture diagrams

Facility shapes were not available for personalization in resource architecture diagram. It has been fixed and shapes with right name (following naming rule) are now proposed.

Case Salesforce : 00130582

Fix of Org-Unit shape in a diagram of Application Scenario Sequence of Flows

Org-Unit shape has been fixed in a diagram of Application Scenario Sequence

of Flows

Case Salesforce : 00132564

Missing link around interaction in Application System Environment diagram

When exploring an interaction between an application system and a partner application system (made in a diagram) the "Consumer" and "Provider" links were missing.

It is now fixed.

No conversion is provided to process existing data.

Name fix in a property page

Name of a sub property page has been fixed, from "Technical Architecture" to "Deployment Architecture"

Case Salesforce : 00134543

Flow measures were displayed twice in some contexts

In some contexts, flow measures were displayed twice on diagrams. The bus has been fixed

Case Salesforce : 00133539

Compliance indicator was not consistent with last assessment value

Compliance assessment indicator in application property page was not updated after an assessment.

It is fixed.

Case Salesforce : 00134208

Deployable package is mandatory when creating a component in a deployment architecture

When adding a component in a deployment architecture, reference deployable package (application or data) were not mandatory. Therefore, component could be a useless empty nutshell. It is now mandatory to select or create a package to define component nature.

Allow to define a cloud service for a microservice in Deployment Architecture

Microservice property page was not allowing to link a cloud service (even if metamodel was designed for it). This fix consists in improving the property page to allow it, like a deployable package.

- **New feature**

Add possibility to use compliance score of an application in a dataset

It was not possible to use compliance score inside a dataset for application. It is now possible.

15. HOPEX IT Portfolio Management (APM)

- **Fix**

Case Salesforce : 00129959

Unexpected behavior with report 'Application environment graph' (objects displayed outside limits)

On a graph with a number of objects displayed in 'full page' mode, some objects leave the visible page when the graph is manipulated.

Case Salesforce : 00132039

Report Data Set creation not working for non-customizer profile in V5

No description

Case Salesforce : 00115483

Application cost report doesn't run if the user profile is Spanish language

No description

Cannot create Report Data Set for non-Customizer profile

No description

16. HOPEX Application Design Solution (ADES)

- **Fix**

Case Salesforce : 00130259

Saving attributes of class instance

Bug fixed: it's now possible to set "attribute value" (and save it) for attributes of class instance

17. HOPEX Business Continuity Management (BCM)

- **Fix**

Case Salesforce : 00130848

Error when creating Incident object

The error message has been managed and the issue fixed.

18. HOPEX DoDAF2 (HDOD2)

- **Change**

Remove useless field when creating a new network technical connection

Network technical connection name is automatically initialized during creation wizard. Therefore there is no need to propose to capture it. It has been removed from the wizard screen.